

**COLFAX TOWNSHIP, WELDON TOWNSHIP  
and VILLAGE OF THOMPSONVILLE  
Benzie County, Michigan**

**Official Zoning Map  
GREATER THOMPSONVILLE AREA ZONING MAP**

*This is to certify that this is the Official Zoning Map of the Greater  
Thompsonville Area Zoning Ordinance adopted on the  
\_\_\_\_\_ day of \_\_\_\_\_, 2014*

DRAFT  
October 20, 2014

**COLFAX  
TOWNSHIP**

Ronald Evitts, Supervisor

DeAnn Mosher, Clerk

**WELDON  
TOWNSHIP**

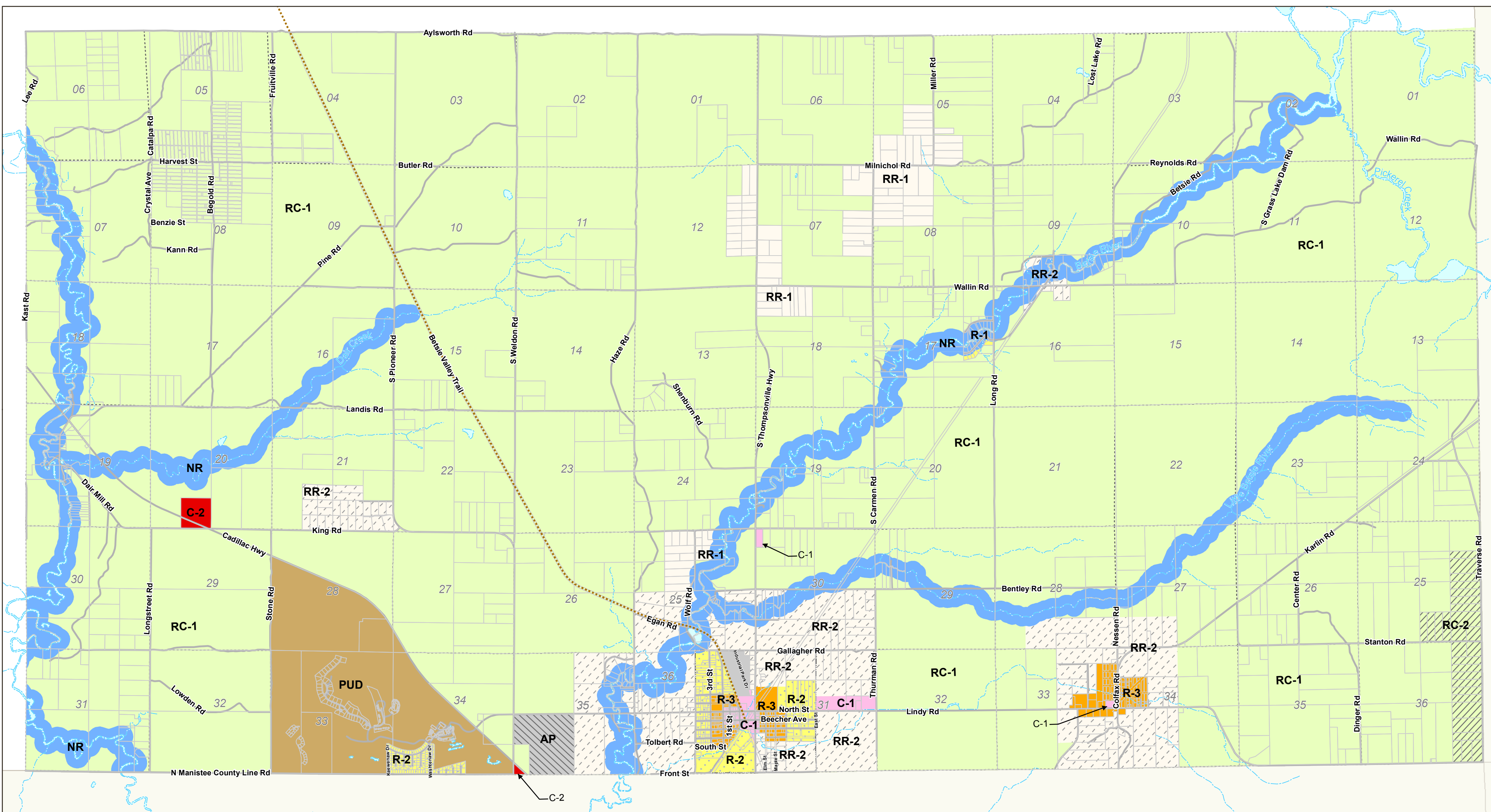
Ronald Hitesman, Supervisor

Lee Kane, Clerk

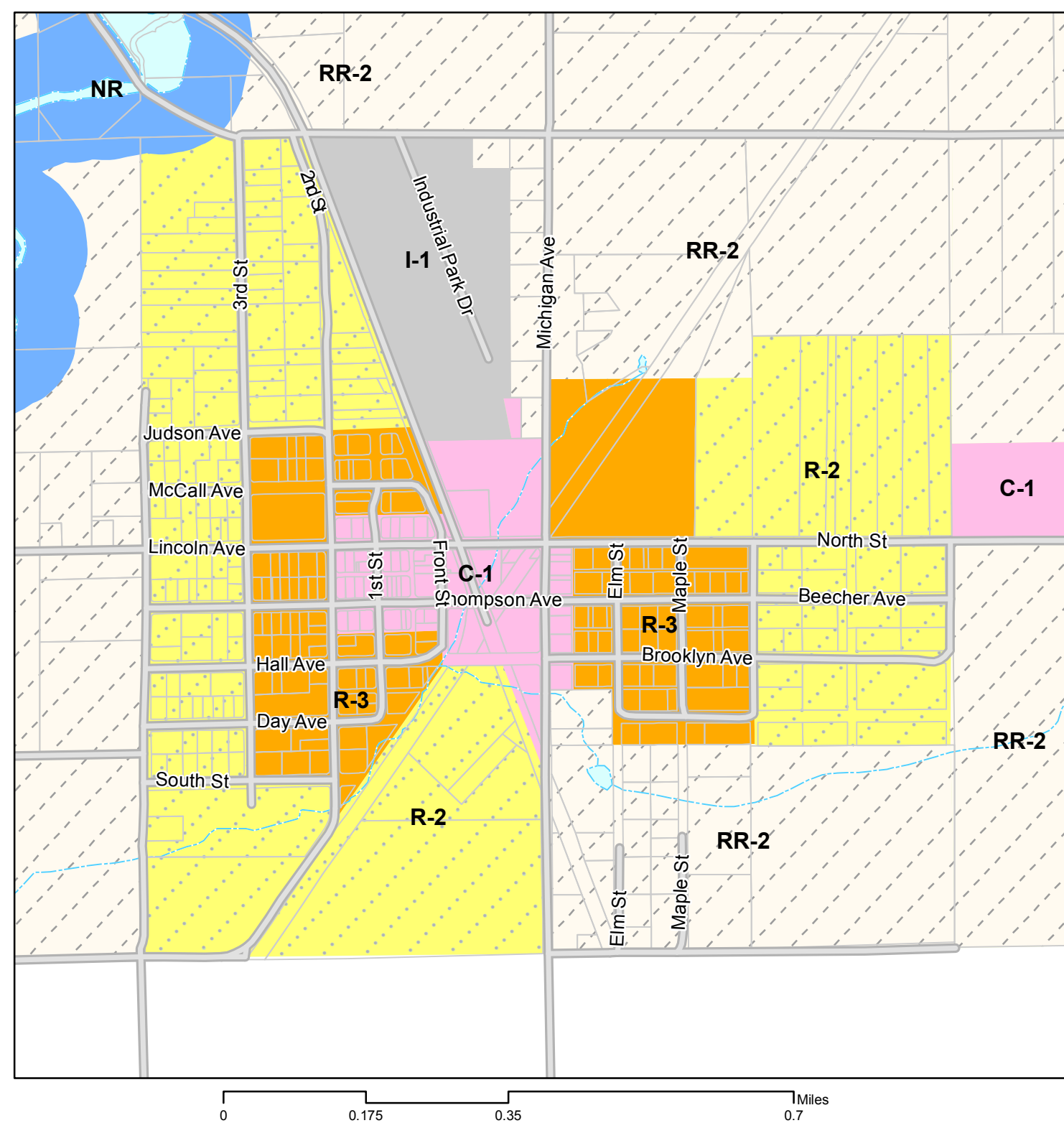
**VILLAGE of  
THOMPSONVILLE**

Michael MacGirr, President

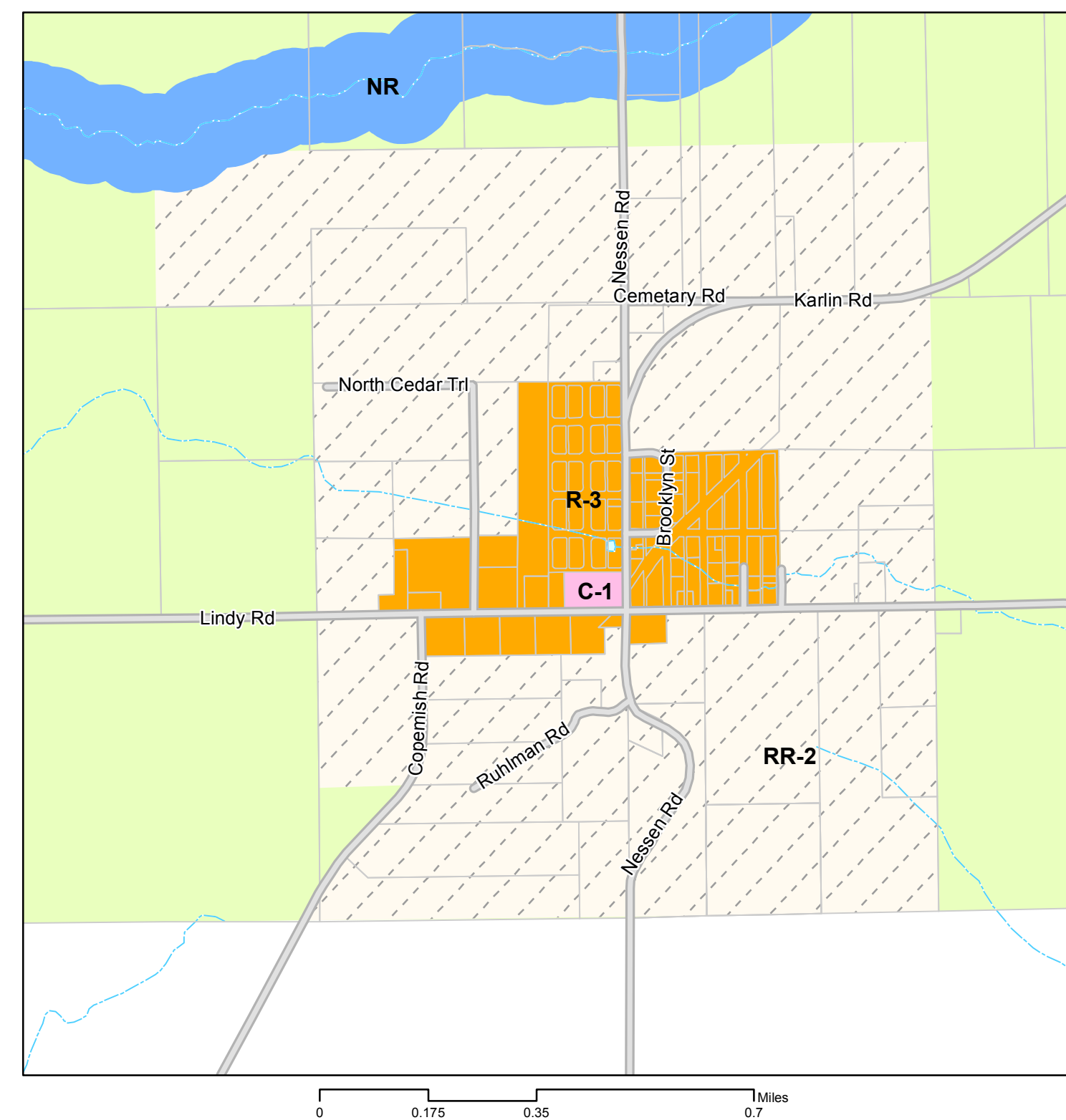
Mary Wixson, Clerk



**CLOSE UP of  
VILLAGE of THOMPSONVILLE**

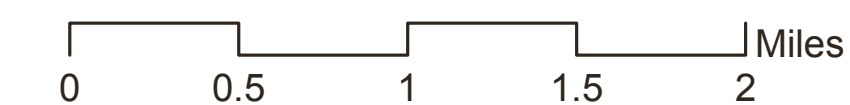


**CLOSE UP of the  
NESSEN AREA**



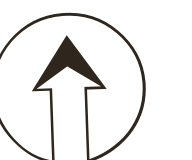
**DISTRICT LEGEND**

- RC-1 Resource Conservation-1
- RC-2 Resource Conservation-2
- NR Natural Rivers District
- RR-1 Rural Residential District-1
- RR-2 Rural Residential District-2
- R-1 Low Density Residential District
- R-2 Medium Residential District
- R-3 High Density Residential District
- MF Multiple Family Residential District
- MF Multiple Family Residential District
- C-1 Local Commercial District
- C-2 General Commercial District
- I-1 Light Industrial District
- AP Airport District
- PUD Planned Unit Development District



**Source:** Data provided by Benzie County and the State of Michigan. OHM does not warrant the accuracy of the data and/or the map. This document is intended to depict the approximate spatial location of the mapped features within the Community and all use is strictly at the user's own risk.

**Coordinate System:** NAD 1983 StatePlane Michigan South FIPS 2113 Feet



**LANDPLAN**  
INCORPORATED  
rural community planning & zoning services  
landplan-eidelson.com | 517.347.2120

**OHM** ohm-advisors.com  
888.522.6711